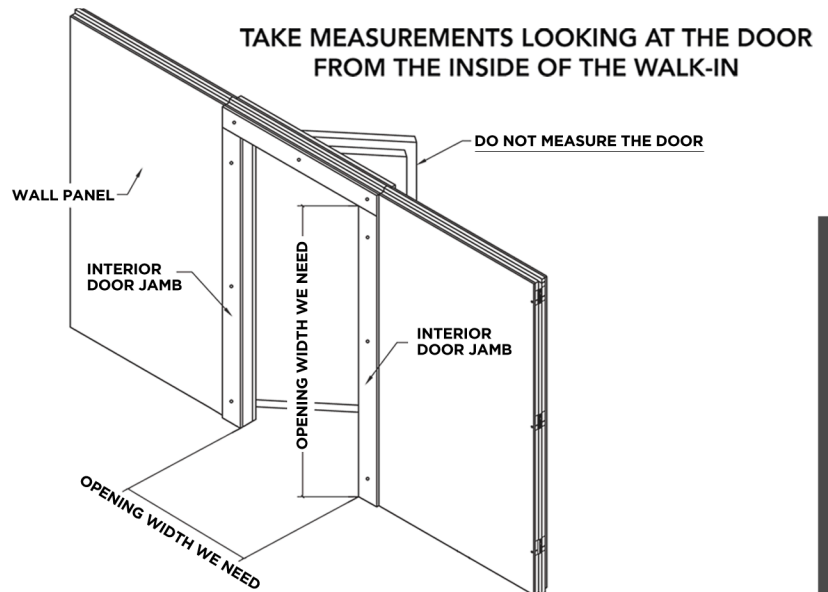


AmeriKooler's Door & Frame Retrofit Systems can upgrade or replace existing cooler or freezer doors to extend walk-in life and improve efficiency. They can be ordered for most model walk-ins; and come with all the components needed for installation by qualified personnel.

IMPORTANT: Specify Cooler or Freezer; and provide an accurate measurement of interior opening height and width. (See drawing at right.)



STANDARD SPECIFICATIONS

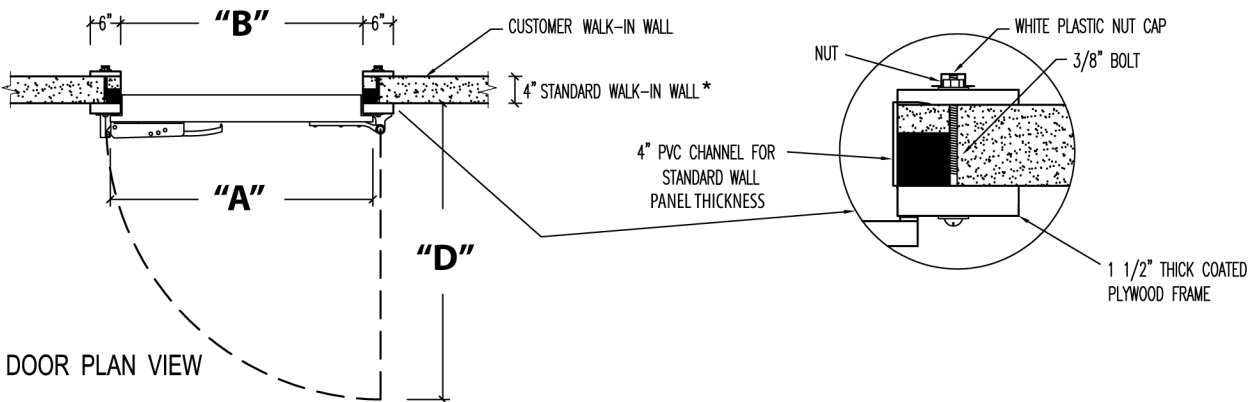
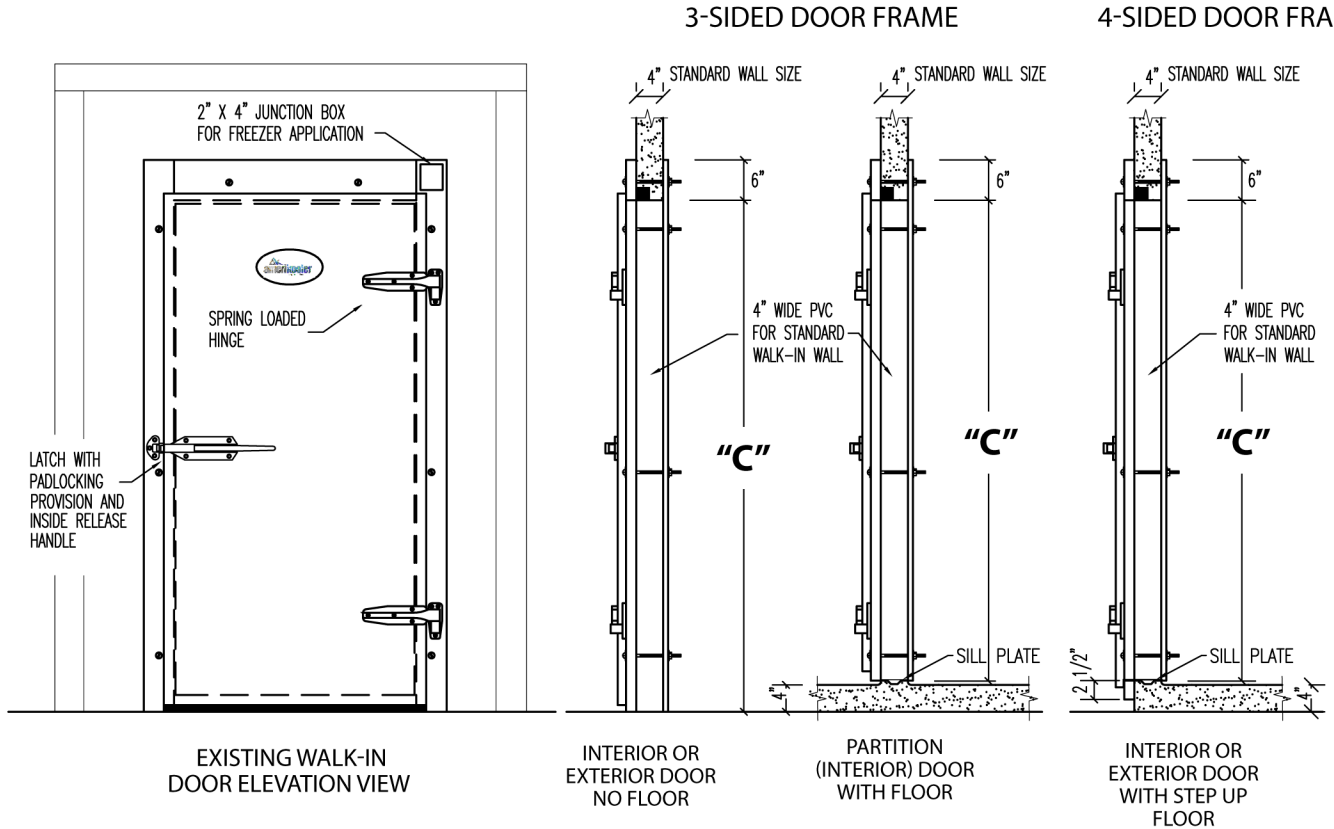
- 1 1/2" thick heavy-duty wooden frame
- 26 gauge stucco-embossed Acrylume® on interior and exterior door and frame surfaces
- 4" thick AK-XPS4 extruded polystyrene insulation providing R-value of R-29 for coolers and R-32 for freezers
- AK-XPS4 insulation contains no formaldehyde, HCFCs or CFCs
- Interior door frame to ensure secure door installation for long lasting performance
- Doors are equipped with cam-rise hinge, spring-loaded hinge, latch and inside glow-in-the-dark PUSH handle
- Thermoplastic (PVC) coated magnetic gasket, essential to ensure a positive frost free seal
- Inside door sweep
- Freezer doors are equipped with perimeter heater wire that is connected to electric gang box mounted on exterior frame
- Doors come with threshold
- Magnetic stainless steel 'L' channel for door gasket contact
- 3-sided frame provided for a walk-in without floor
- 4-sided frame provided for a walk-in with step-up floor
- Provide 8 to 12 3/8" pass-through mounting bolts with fasteners (depending on door height)
- 4" PVC channel for covering existing 4" wall thickness; When wall is thicker than 4", a matching metal covering will be provided

Freezer Door Electric Specification:

Available in 115-Volt or 220-Volt

AVAILABLE OPTIONS

- Alternative door finishes, include:
 - 26 gauge white stucco embossed galvanized steel, silicon polyester painted
 - 24 gauge stainless steel
- Interior kick plate (Aluminum Diamond Tread)
- Exterior kick plate (Aluminum Diamond Tread)
- Pilot light switch (shipped loose)
- Vapor-proof light (shipped loose)
- 2" dial thermometer (shipped loose)
- Non-heated viewing window (coolers)
- Heated glass & frame viewing window (freezers)



STANDARD RETROFIT DOOR & FRAME SIZES

3-SIDED DOOR FRAME				
DOOR SIZE WIDTH X HEIGHT	CLEAR OPENING B X C	DOOR CLEARANCE D	FREEZER HEATER WIRE	
			AMPS	OHMS
32 3/8" X 78 3/8"	30" X 78"	39 3/8"	2.2	5.7
Most Requested Size				
36 3/8" X 78 3/8"	34" X 78"	43 3/8"	2.2	5.7
38 3/8" X 78 3/8"	36" X 78"	44 3/8"	2.2	5.7
44 3/8" X 78 3/8"	42" X 78"	51 3/8"	2.2	5.7
50 3/8" X 78 3/8"	48" X 78"	57 3/8"	3	3.34
62 3/8" X 84 3/8"	60" X 84"	69 3/8"	3	3.34
74 3/8" X 84 3/8"	72" X 84"	81 3/8"	3	3.34

4-SIDED DOOR FRAME				
DOOR SIZE WIDTH X HEIGHT	CLEAR OPENING B X C	DOOR CLEARANCE D	FREEZER HEATER WIRE	
			AMPS	OHMS
32 3/8" X 80 3/8"	30" X 78"	39 3/8"	2.2	5.7
36 3/8" X 80 3/8"	34" X 78"	43 3/8"	2.2	5.7
38 3/8" X 80 3/8"	36" X 78"	44 3/8"	2.2	5.7
44 3/8" X 80 3/8"	42" X 78"	51 3/8"	2.2	5.7
50 3/8" X 80 3/8"	48" X 78"	57 3/8"	3	3.34
62 3/8" X 86 3/8"	60" X 84"	69 3/8"	3	3.34
74 3/8" X 86 3/8"	72" X 84"	81 3/8"	3	3.34

*CUSTOM OPENING SIZES ARE AVAILABLE UPON REQUEST. SPECIFICATIONS ARE SUBJECT TO CHANGE WITHOUT NOTICE.